

SW 1/4

102

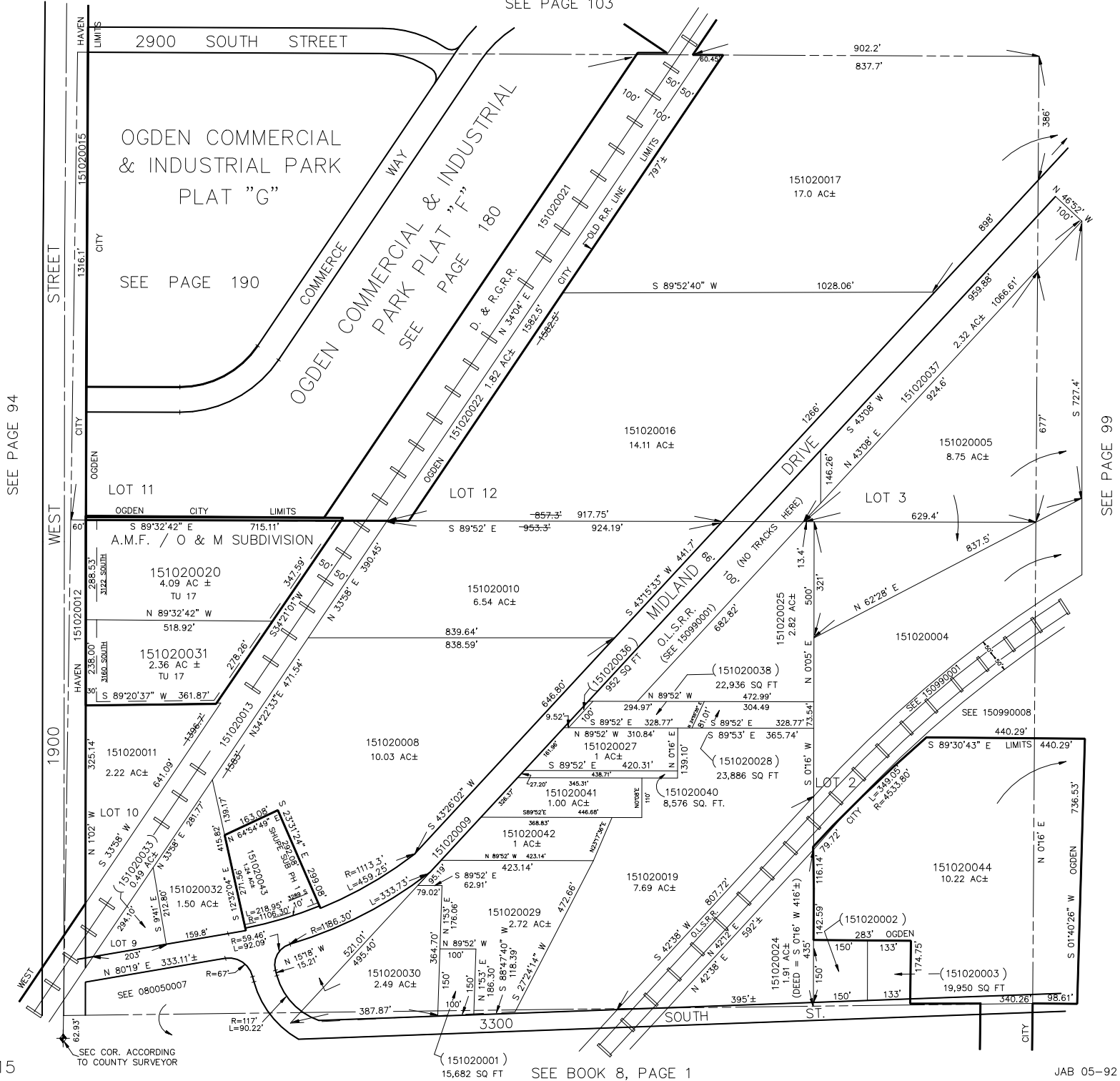
SECTION 36, T.6N., R.2W., S.L.B. & M.

IN OGDEN CITY, WEST HAVEN CITY & WEBER COUNTY

TAXING UNITS: 17, 22, 25, 277, 337

SCALE 1" = 200'

SEE PAGE 103



15 SEE PAGE 94

SEE BOOK 8, PAGE 1

JAB 05-92